

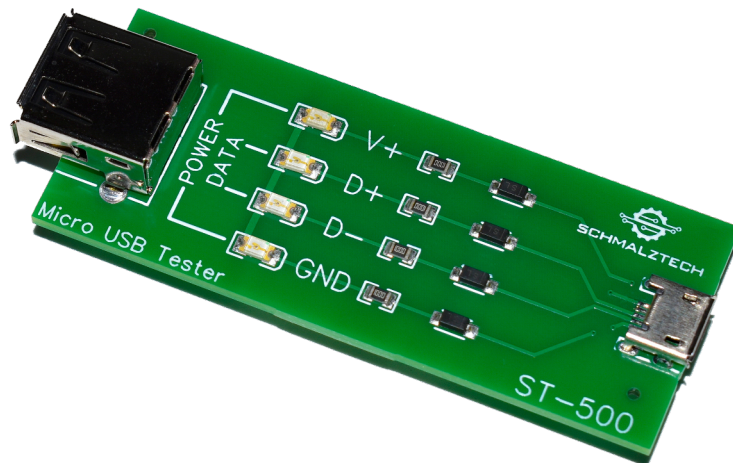


SCHMALZTECH

ST-500

Micro USB Cable Tester

Instruction Manual

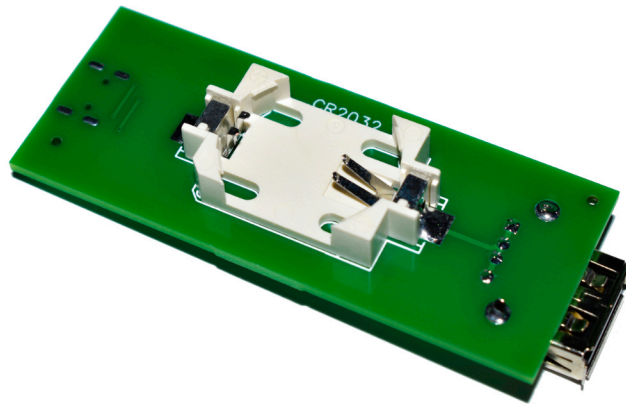


For additional help with this product please contact our support department at: support@schmalztech.io

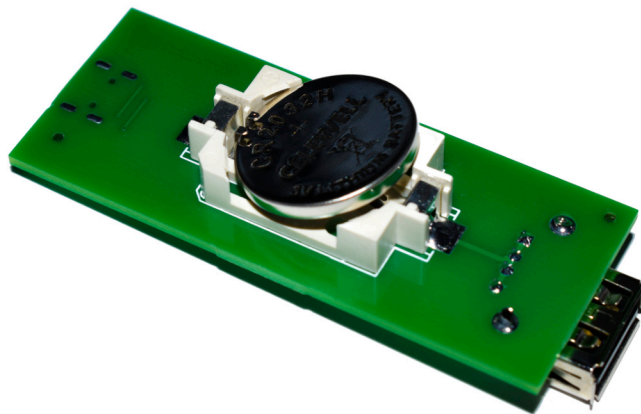
Battery Installation

The ST-500 Micro USB Cable Tester uses a single CR2032 coin cell battery. One battery is included with your ST-500 and replacements for this common battery can be found most places batteries are sold.

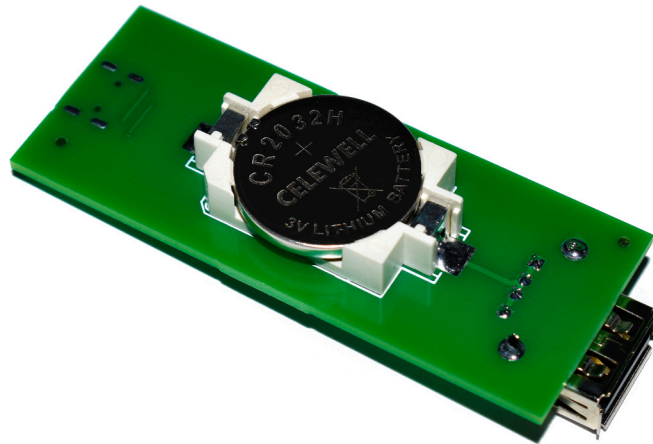
Step 1: Place your ST-500 face down with the CR2032 label at the top.



Step 2: With the positive side of the battery facing up insert one edge of the battery under the metal fingers of the holder.



Step 3: Firmly press down on the battery until it snaps into place.

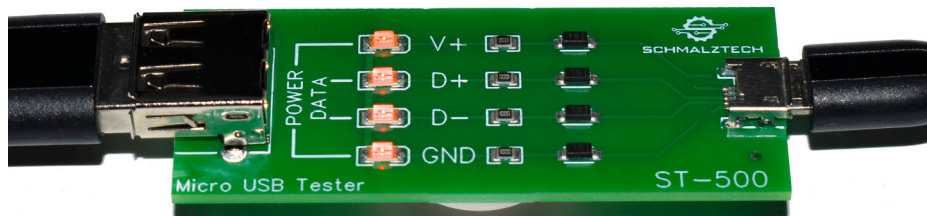


Operation

WARNING: Only use the ST-500 with USB cables that are not connected to any devices! Using the ST-500 with a cable that is connected to any other device could result in damage!

Standard Micro USB cables have four wires in them, two for power and two for data. Some cheaper cables, however, come with only two wires inside of them. It is impossible to tell which type of cable you have by simply looking at it and using a cable which only has two wires can lead to confusion and headaches.

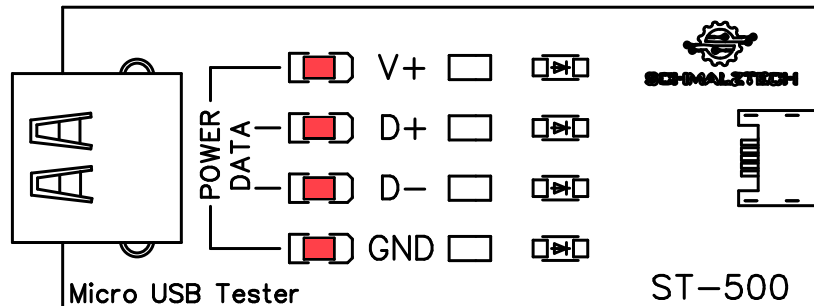
The ST-500 is a device which lets you tell what type of cable you have quickly and easily. Simply connect both ends of your Micro USB cable to the tester and look at the lights. There is one light for each wire in your cable. Each light that is on when a cable is connected indicates one good wire inside of your USB cable.



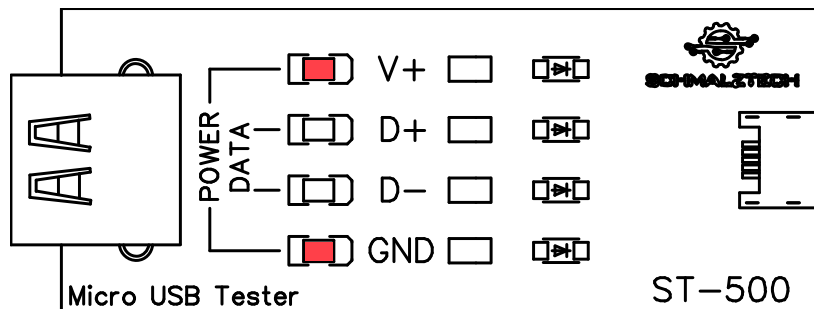
If your testing a cable and you can change the lights by moving the end of the cable you have a weak connector. A cable that displays this might cause connection issues in the future.

The following page has common light configurations and their meanings.

Fully functional Micro USB cable. All four wires are present and working properly.



Power only Micro USB cable. Cables like this will work for power and charging but will not be able to transfer any data



Broken wire. A single wire inside your cable has broken. Cables that test like this should be replaced.

